

## About SendR

SendR is an application which can be installed to a mobile device which will enable you to browse your device's file directory and upload files into your PebblePad asset store.

## Authorisation

You can login to SendR using your PebblePad username and password.

For users who access PebblePad using a single sign on / single click from another program (For example Blackboard or Portal) you will need to add a password to PebblePad in the settings section (**tools > settings > preferences**).



Once you have created your mobile password you will be able to login to SendR with your username and mobile password.

**TIP!** The mobile password has an inbuilt security feature, meaning it will not work unless you login to your main PebblePad account at least once every 45 days.

## Installing SendR

To install SendR, navigate your mobile net browser to:

<http://www.pebblepad.co.uk/mobiledata/sendr.jad>

This will download a relatively small file which describes the application to your mobile device. SendR will be downloaded and installed. This step is important to ensure that you receive only trusted software from Pebble Learning. If you have any issues with installing SendR, please refer to 'supported devices' at the end of this document.

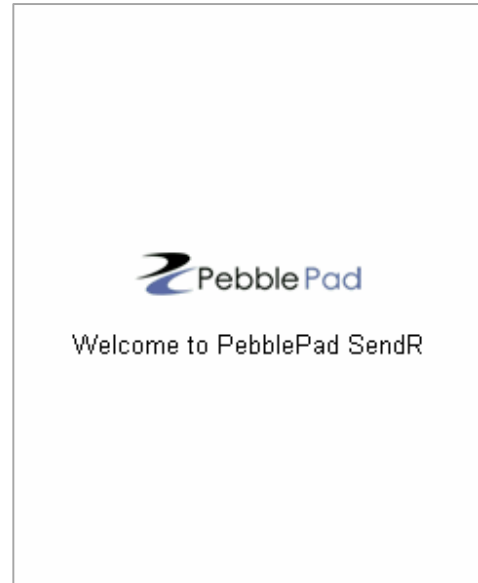
more...



## Using SendR

Once installed, SendR can be launched from either the application folder or Java Games folder depending on your device.

While you see the welcome screen, SendR is looking for previously entered details to save you time. This will not take long.

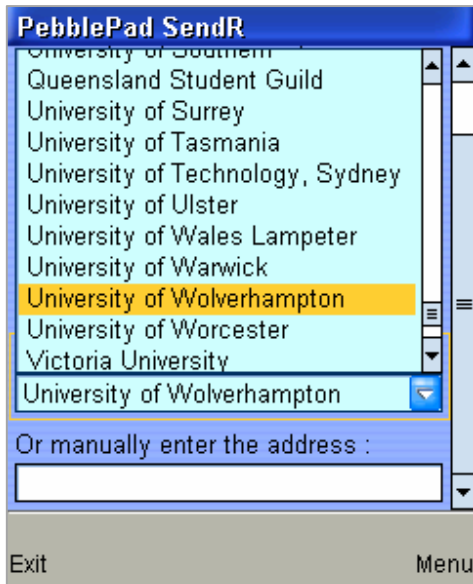


SendR will ask PebblePad for a list of URLs which you can connect to.

**TIP!** Once the user details have been entered SendR will remember these so that you do not have to re-enter them each time.

more...

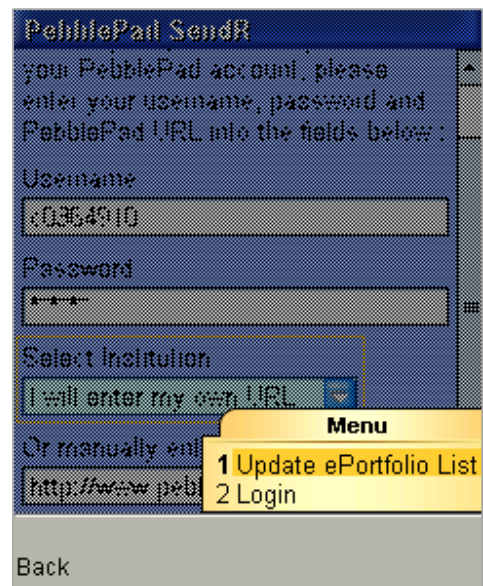
01 02 03 04 05 06



**TIP!** If your institution is not shown in the list you can enter it manually in the address box.

You can update the ePortfolio list, or login by selecting 'Menu'.

**Please Note:** The user details are not validated until you upload the first file, if these are incorrect you will need to re-enter them when asked.



more...

01

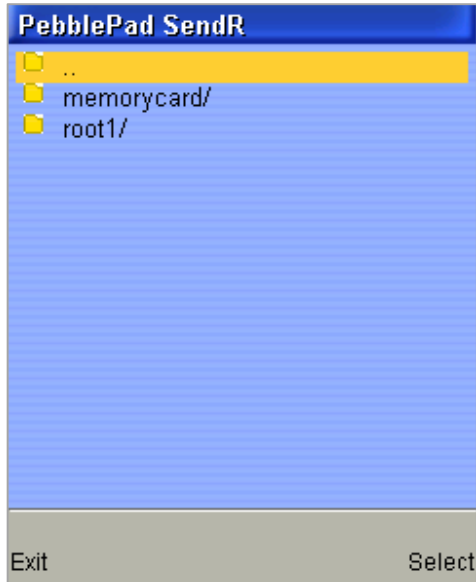
02

03

04

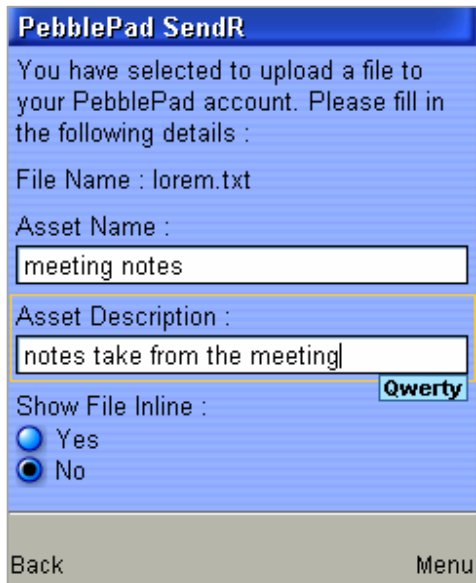
05

06



Once you have entered the user details and logged in you will be able to browse your devices files.

Navigate through your files and select a file you wish to upload.

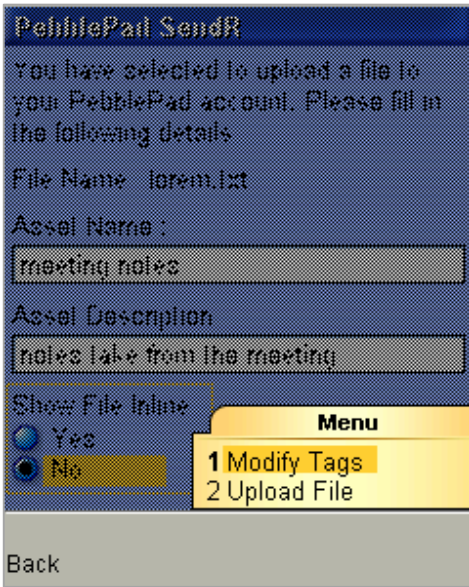


After confirming the file upload, you can name your asset, give it a description and tag it.

If it is a txt, htm or html file, you can choose to display it inline.

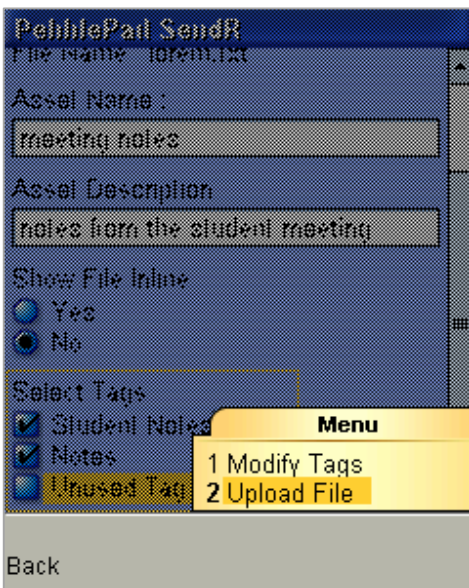
This means that when you choose to view the asset within REfLECT, you can see the file immediately rather than having to download or view it from the 'asset holder' as you would with most uploaded files.

more...



You can also create up to five tags for each asset you upload. To do this, select 'Modify Tags'.

**TIP!** Only the selected tags will be used when tagging an asset. Any tags created but not selected will be stored for the next file upload.

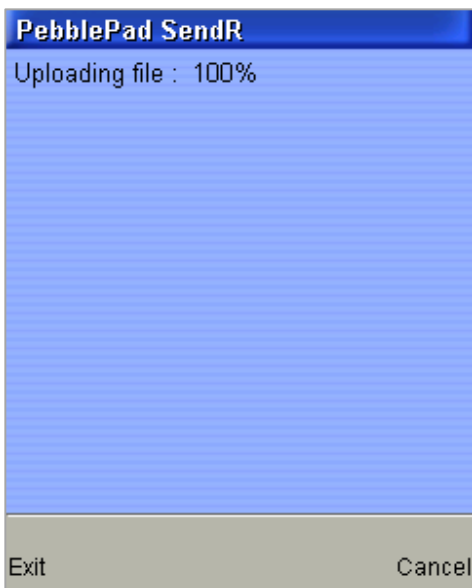
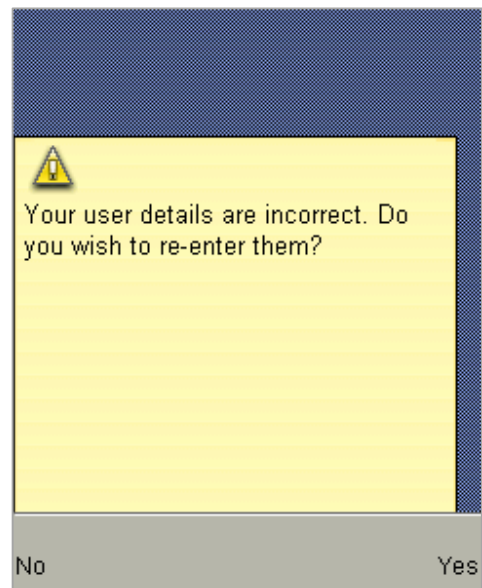


When the details are complete, open the menu and select 'Upload file'. Your file will now be transferred to PebblePad.

more...



**Please note:** If your user details cannot be verified you may see the following screen. Click yes to re-enter them.



You will see the upload progress here. It is normal for the process to take longer than uploading from a PC.

Some devices may be slower uploading large files on slow data transfer networks.



*more...*

01

02

03

04

05

06

## Supported Devices

The SendR application requires the following specifications on your mobile device:

- MIDP 2.0 or greater
- JSR-75 PDA Optional Packages
- Internet Connection (Such has WAP / WIFI)

If you are unsure of your devices specification please consult the manufacturer.

## Digital Signatures

In order to ensure that you are using authentic software developed by Pebble Learning the application has been digitally signed using VeriSign. For more information about VeriSign visit <http://www.verisign.co.uk>

Your mobile device must support the following security certificate:

- VeriSign Class 3 Public Primary

If your mobile device does not support this certificate then the SendR application may still install but it is possible that it may not work properly.

**TIP!** Consult your user documentation to verify which certificates your device supports.