

## About Pebble PDA

Pebble PDA is a software package designed to work on Windows Mobile 2003 and later versions.

## Installing Pebble PDA

The installation can be completed in any of three ways:

1. An exe file which you run on a PC and then use Active Sync or Windows Mobile Device Centre (for Windows Vista) to install on your mobile device. Follow your device instructions for how to do this
2. By adding the .CAB file directly to your mobile device (for more experienced users)
3. By downloading the .CAB file directly to your device from this URL

<http://www.pebblepad.co.uk/mobiledata/pebblepda.cab>

These instructions explain how to load Pebble PDA using the executable file. Once downloaded open the exe file and follow your normal process for loading software on to your PDA. You will have to agree to the License Agreement.

Click **next** to install the components.

Pebble PDA will now begin to install itself and you will be prompted to carry out any actions on your PDA.

Your PDA may ask you to choose where on your device to install the software – select the appropriate location and choose Install

more...

01

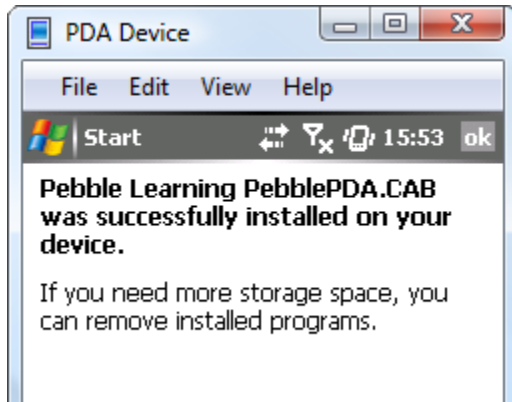
02

03

04

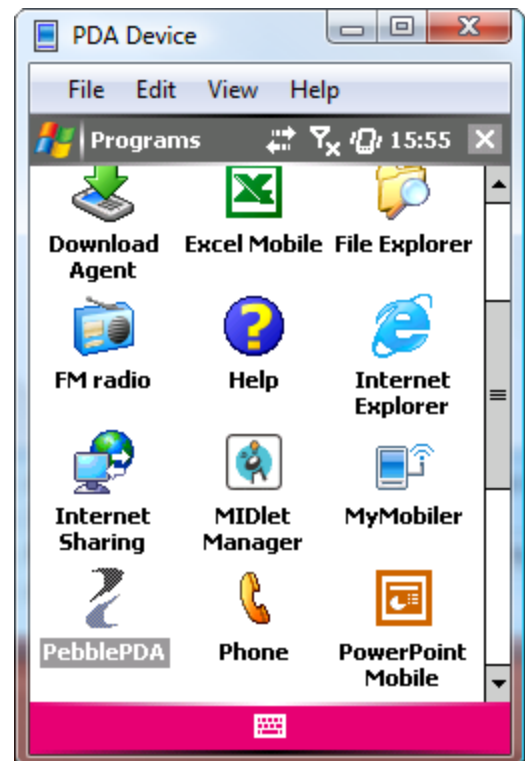
05

06



Pebble PDA will now be installed on your mobile device. Once complete you will see a confirmation screen.

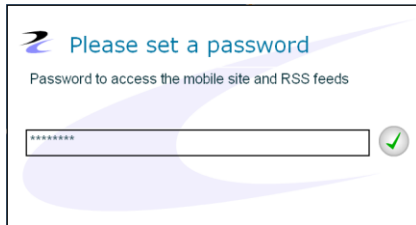
Once loaded, you can access Pebble PDA from the **Programs** folder.



p2

## Create User // Login

To access PebblePad from your PDA or smartphone, you will need to access your account from a computer first.

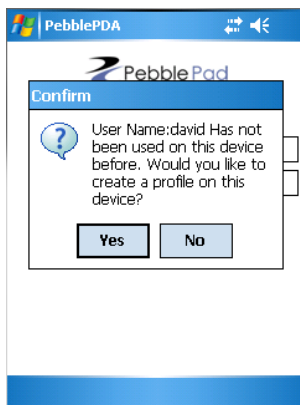


If this screen pops-up when you log in to PebblePad, create a password here to access PebblePDA. This can be the same as your PebblePad password.

**TIP!** As a security measure, your password does not appear as you type, so please type carefully!



This is the first screen of Pebble PDA. You can log in here.



You will be asked to confirm the creation of a profile on the device. Select **yes** to create a profile.

Each user will only need to do this once for each mobile device.

You are now setup and able to access Pebble PDA from your PDA or smartphone.

more...

01

02

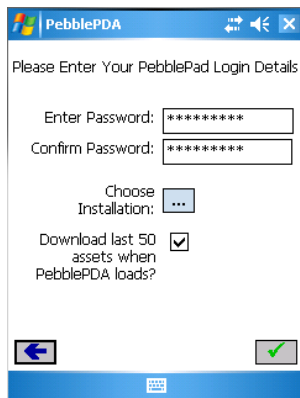
03

04

05

06

Confirm your password and choose to download your 50 most recent assets.

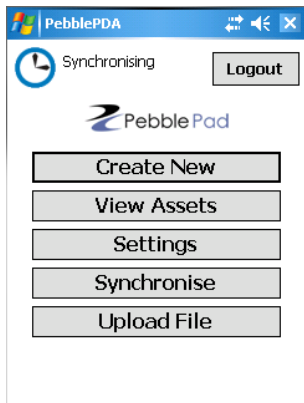


The PDA will support

- abilities
- achievements
- action plans
- activities
- experiences
- meetings
- proformas
- thoughts

You will also need to choose an Institution:



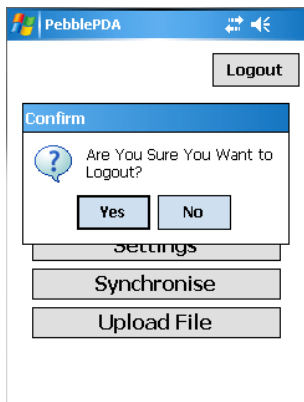


When you are logged in, you will see this screen.

**TIP!** You can synchronise your PDA and Online assets by selecting the **synchronise** button.

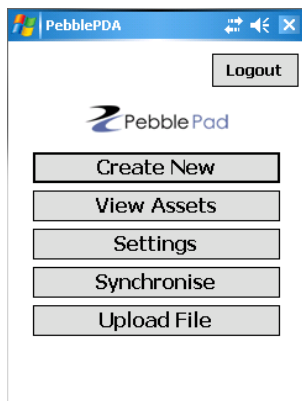
**Please note:** If you have changed your password within PebblePad, your Pebble PDA password must match for you to be able to synchronise. This is because Pebble PDA is installed to the device, and only connects to the internet when it synchronises.

Select the **logout** button to log out, and then confirm to exit.



## Overview

Pebble PDA allows you to access your PebblePad account from a PDA or smartphone. You can create new assets and upload files too.

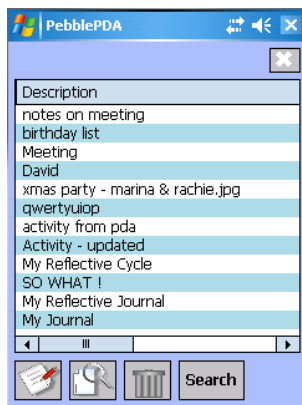


This is the main menu of Pebble PDA, where you can access all the features.



Within Pebble PDA, you can create assets by selecting **create new**.

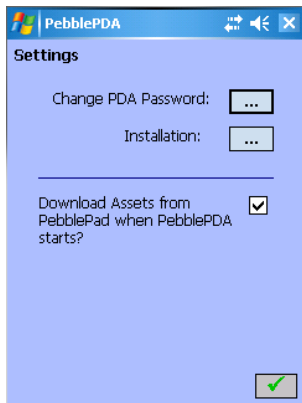
Their structure is the same as PebblePad. By selecting **synchronise** from the main menu, you can send any created assets into your PebblePad asset store.



You can edit or view any assets which are stored on your PDA, by selecting **view assets** from the list.

Next, highlight the asset you require. Then selecting the **pen and paper** icon will allow you to edit an asset. Or, select the **magnifying glass and paper** icon to view an asset.

To delete an asset, highlight it and then click the **dustbin** icon.

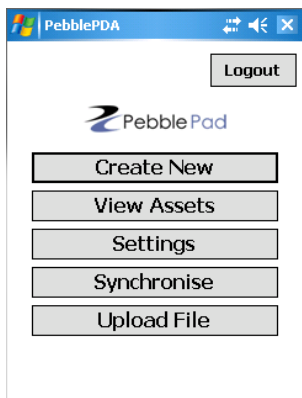


The **settings** menu allows you to change the password for Pebble PDA.

Please note that if you change the password for PebblePad, this password must match if you wish to synchronise the PDA's assets. This is because the PDA version is not online, and is installed onto the device.

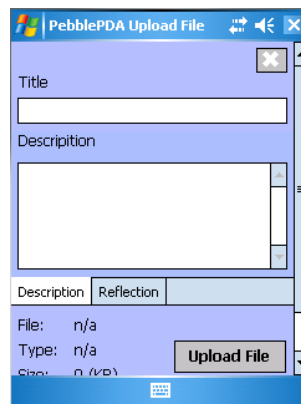
## Upload file

You can upload files from your PDA or smartphone to Pebble using Pebble PDA. When you choose to upload, they will be added to your online asset store immediately. As an example, you could take photos with your smartphone, upload them to PebblePad, and use them as evidence for your CPD record.



This is the first screen of Pebble PDA. **Select upload file.**

Fill in a title and description for the file you will upload.



more...

01

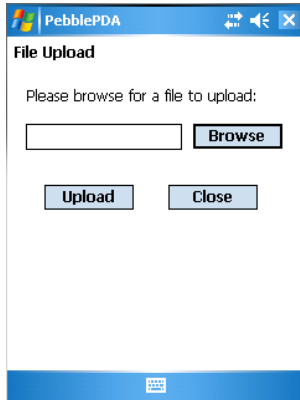
02

03

04

05

06



Selecting the **upload** file button will let you browse your device for the file.

When you have selected the file, confirm the upload by selecting **upload**. The file will be sent to your PebblePad asset store, and will be available when you access PebblePad from a computer, as well as from this device.

