

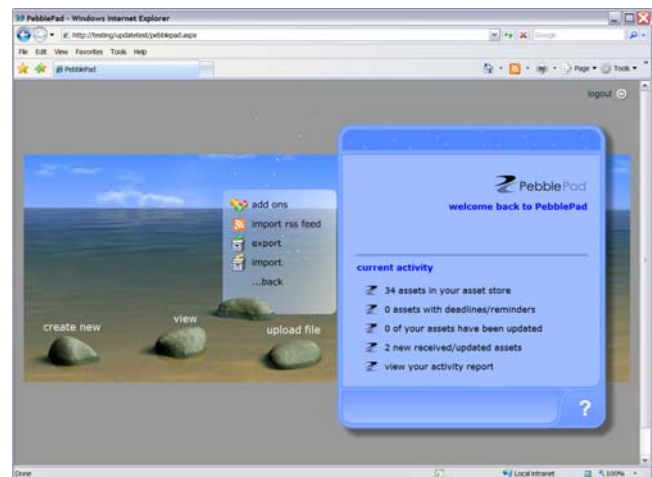
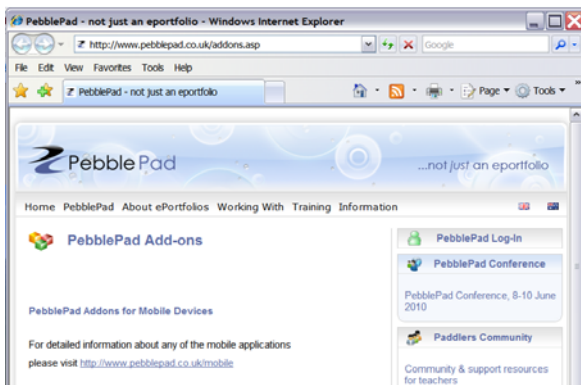
PebbleTray *Installation Guide*

PebbleTray is a desktop application you can download and install on a Windows based computer. It gives you instant access straight from the taskbar to create simple thoughts and upload files directly into your PebblePad account.

Set Up and Installation

You can download PebbleTray by going to the Add ons option of the Tools menu in your PebblePad account.

This will open a list of additional options available to you from the PebblePad website.

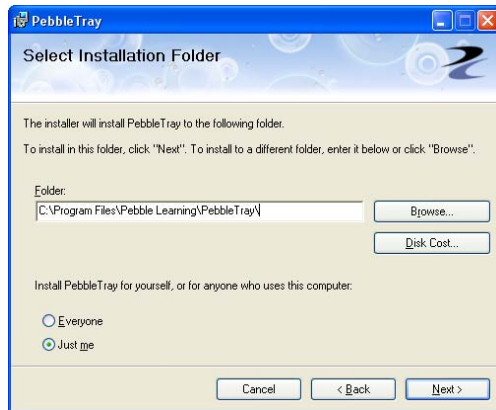


Once you have downloaded PebbleTray, click on the Set up tool to open the installation wizard. This will display the following screen:



Click next to continue installing the PebbleTray. At any point during installation you can stop the installation by clicking cancel and this will stop the process. Clicking back will take you to the previous screen.

Click next to take you to the following screen.



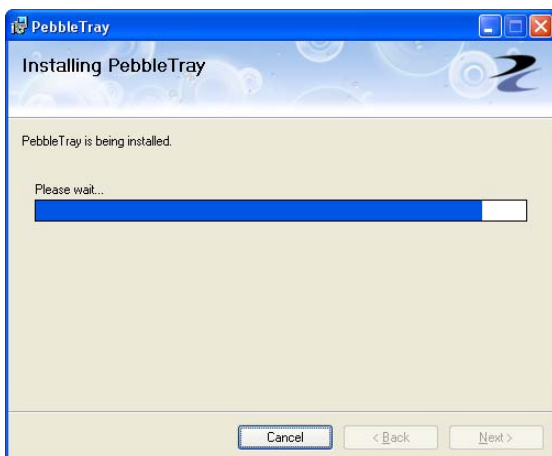
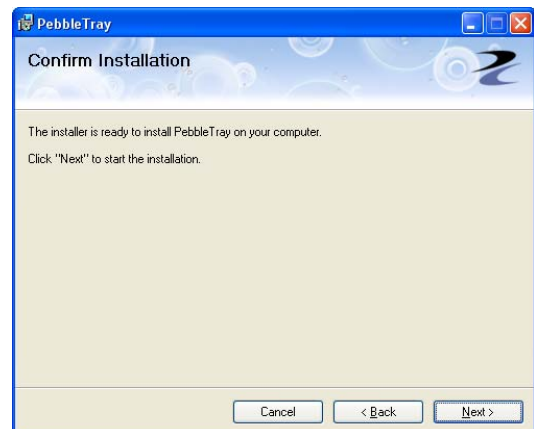
This screen allows you to choose where you would like the PebbleTray files to be stored. The system automatically selects the default Program Files folder, however you can select a different location by clicking the Browse button and following the prompts.

If you are unsure about how much space you have on your computer drives you can click the Disk Cost button to show you which drives have sufficient space.

You can then select whether or not you want PebbleTray to be accessible to all users on the computer. Click next to continue installation.

This screen confirms that you can now start installing the PebbleTray on the computer. Click next to begin the installation.

The following screen will be displayed to show the progress of the installation.



Once the installation has been completed you can then click the close button to close the installation screen.